

# NAASS 43rd Annual Conference

November 5-8, 2006  
Kansas City, Missouri

*Summer  
Sessions...  
As You  
Requested*





*Summer Sessions...*  
*As You Requested*

**Table of Contents**

<b>General Information</b> .....	1-5
<b>Pre-Conference Activities</b> .....	.6
The Artistic Expression of Kansas City .....	.6
Early-Bird Reception .....	.6
<b>Sunday, November 5</b> .....	7-9
New Administrators' Workshop .....	7
Standing Committee Meetings .....	8
Official Opening Session of the 43rd Annual NAASS Conference .....	8
Opening Plenary Session .....	8
Kansas City History Presentation .....	9
President's Reception .....	9
<b>Monday, November 6</b> .....	10-17
Continental Breakfast .....	10
Creative and Innovative Poster Session Presentations .....	10
Plenary Session II .....	10
1st Four Concurrent Sessions .....	11
Regional Luncheons .....	12
2nd Four Concurrent Sessions .....	13
Consultation Corner .....	15
3rd Four Concurrent Sessions .....	16
Consultation Corner .....	17
Host Institution's Reception/Baseball Cap Exchange .....	17
<b>Tuesday, November 7</b> .....	18-22
Continental Breakfast .....	18
Issues Roundtables .....	18
Plenary Session III .....	19
4th Four Concurrent Sessions .....	20
Truman Presidential Library Tour .....	21
Awards Banquet with Reception, Silent Auction and Entertainment .....	22
<b>Wednesday, November 8</b> .....	23-25
Buffet Breakfast .....	23
Annual Business Meeting .....	23
Issues Roundtables .....	23
5th Four Concurrent Sessions .....	24
Administrative Council Luncheon Meeting .....	25
<b>NAASS Administrative Council</b> .....	26-27
<b>Hotel Meeting Room Facilities</b> .....	28-29

A Note  
About This  
Year's Meeting

Summer Sessions...  
As You Requested



Don't miss any of the excitement at this year's conference. Some of the highlights are listed below:

• **Poster Award Presentations**

Listen to short, prepared presentations during the creative and innovative poster session on Monday morning. What used to be a casual viewing and discussion with participants, is now a formal session. Come early for the continental breakfast and grab a seat to enjoy the presentations.

• **The Consultation Corner**

Have a problem, possible opportunity or tough decision you're trying to make? Chances are one of our NAASS "experts" has tackled the same issue. We've set up a Consultation Corner on Monday where you can pose your questions to selected NAASS members and discuss in a quiet and relaxed atmosphere. Our expert's areas of specialty will be posted to help you decide which "consultant" is right for you.

• **Baseball Cap Exchange**

Did you know that Kansas City is home to the Negro Baseball League? Trade a baseball cap from your school at the Host Institution's Reception on Monday from 6:00 - 7:00 p.m.

• **Dinner Groups**

On Monday evening join other NAASS members for dinner at local restaurants. Look for sign-up sheets in the registration area to select a restaurant. This is a perfect time to network and visit with conference attendees while enjoying the best of Kansas City cuisine!

• **Awards Banquet**

Don't miss this annual event! The winners of the innovative poster award contest will be announced at the banquet. New this year, bid on a variety of items donated by NAASS members at a silent auction. Items up for auction will be available for viewing and bidding from 6:00 - 7:30 p.m., and the winner's names posted after the banquet. All proceeds help defray costs of the annual conference.

Both the reception and banquet are held at 18th and Vine (see information about this area below). Catch a reserved bus at the hotel and take it to the banquet. Buses will be available on a timed basis to return people to the hotel.

*18th and Vine: "The crack of a bat and the smooth melodies of a tenor sax bring back memories of what was once the heart of Kansas City culture." Jazz and baseball are known across the globe as fixtures of the Kansas City urban culture. Both of these come together in the revitalized 18th and Vine Historic District.*

*Kansas City, during the 1930s, based on the Pendergast political machine, prospered while other areas of the nation felt the economic hardships. The 18th and Vine district featured dozens of nightclubs where patrons could visit until the early morning hours.*

*In 1920, the owner of the Chicago American Giants, Rube Foster, organized a*

## Conference Particulars

## Summer Sessions... As You Requested



*meeting in Kansas City which resulted in the formation of the Negro National League." Their motto, "We are the ship, all else the sea," projected the enthusiasm for America's greatest pastime sport.*

### • Photo Scavenger Hunt

It's time to move around and see all this area has to offer. Pictures will be distributed showing well-known items. It'll be your job to determine what the item is. The person who can name all the items will win a great prize!

### Concurrent Workshop Tracks

The concurrent sessions are the substance of the conference. This year, the workshops are organized in the four following categories:

Concurrent Session A = Marketing and Research

Concurrent Session B = Administrative Structure

Concurrent Session C = Programming

Concurrent Session D = Professional Development

### CONFERENCE REGISTRATION

Conference registration and payment with credit card may now be completed online by clicking on the link for the Hyatt Regency at Crown Center Hotel. You may also make your hotel reservation and pay the required first night deposit online. The conference registration web address is [www.park.edu/naasskc](http://www.park.edu/naasskc). The hotel link is clearly marked at our website, as well.

Conference registration may also be completed by mail to *Dr. Timothy C. Westcott, Park University, PMB 117, 8700 N.W. River Park Drive, Parkville, MO 64152 USA* or fax (816) 741-4911, along with the credit card information or check enclosed.

Registration and fee payments are due no later than **Friday, October 27, 2006**.

All fees paid, less \$100.00, are refundable if the conference registration is cancelled before **Friday, October 27, 2006**. There are multiple Basic Registration Fee schedules included for the 43rd Annual Conference. These fees include all planned activities except: (1) the Saturday trips to the Nelson-Atkins Museum of Art and the Kemper Contemporary Museum of Art, (2) the Tuesday afternoon tour to the Truman Presidential Library and Independence, Missouri, and (3) the New Administrators' Workshop.

### REGISTRATION PAYMENT

The two registration payments are:

**Payment 1: Basic Registration Fee is \$450.00 USD (\$525.00 for non-members)**

This registration fee is available during the months of **August and September, 2006**. Online or faxed registrations may be done with a credit card—VISA, MasterCard, or Discover Card. Payment by mail can be paid with a check, money order, or credit

## Conference Particulars

## Summer Sessions... As You Requested

card. Please make check or money order payable to *Park University* and mail it in with your registration form to the below contact.

**Payment 2: Late Registration Fee is \$475.00 USD (\$525.00 for non-members).**

This registration fee is available during the month of **October 2006** and through registration at the conference. Online or faxed registrations may be done with a credit card—VISA, Master Card, or Discover Card. Payment by mail can be paid with a check, money order, or credit card. Registrations after October 27, 2006 should be completed by overnight mail in order to guarantee registration or at the actual conference. Please make check or money order payable to *Park University* and mail it in with your registration form to:

Dr. Timothy C. Westcott  
Park University, PMB 117  
8700 N.W. River Park Drive  
Parkville, MO 64152 USA  
tim.westcott@park.edu • (816) 584-6364 (Office) • (816) 741-4911 (Fax)

### **MULTIPLE REGISTRATIONS**

A reduced registration fee is available to any institution sending more than two delegates to the conference. Each additional registrant from the same institution pays only \$425.00 USD per registrant. (To insure proper credit, it is helpful to submit all registrations from one institution at the same time.)

### **GUEST TICKETS**

Tickets for guests and spouses are available to all non-meeting functions as indicated on the Registration Form (See under Conference Functions for Guests). If you intend on attending the conference with a guest or a spouse, it is important that guest tickets be purchased in advance since certain conference functions, such as tours and non-meeting socials, will require name badges.

### **HOTEL RESERVATIONS**

The conference rate at the Hyatt Regency Crown Center Hotel is **\$119.00 per night** (single or double) plus applicable taxes. The hotel will honor the conference rate one day prior to and after the conference.

Reservations may be made online when you register for the conference online or contacting the Hyatt Regency Crown Center Hotel at (800) 233-1234. Be sure to reference the **NAASS 2006 CONFERENCE** to obtain the conference rate. There are a limited number of rooms reserved and reservations are on a first-come, first-served basis.

Please note that the final date for securing guaranteed hotel reservations is **Wednesday, September 27, 2006**. Reservation requests received after 5:00 p.m. CST on

## Conference Particulars

## Summer Sessions... As You Requested



the cut-off date will be accepted on a space and rate availability basis. Room rates after September 27, 2006 may range from \$175.00 to \$225.00 per night. Check-in time is 3:00 p.m. and check out time is 12:00 noon.

Reservations must be guaranteed by payment of the first night by credit card. If you find it necessary to change your plans, please contact the Hyatt Regency Crown Center Hotel by 12:00 (noon) on the date of your scheduled arrival. Failure to cancel your reservation will result in a charge of one night plus tax. NAASS is not responsible for covering cancelled hotel reservations. For further information:

Hyatt Regency Crown Center Hotel, 2345 McGee Street, Kansas City, MO 64108 USA  
(816) 421-1234 • (800) 233-1234

Information is also available on the hotel link of the NAASS web site or at [www.park.edu/naasskc](http://www.park.edu/naasskc)

### **EARLY DEPARTURE CHARGE**

Upon check-in, guests will be asked to reconfirm their departure date and revisions may be made at the point of check-in. Should a guest choose to depart earlier than the date agreed to at check-in, a \$100.00 service charge will apply.

### **PARKING**

Valet parking for overnight guests is \$15.50 per day, inclusive of all taxes and will be charged to the guest's room bill. Daily valet parking rate is \$9.00 per day. Public parking is available at the hotel at a variable rate based on time parked.

### **BUSINESS CENTER**

The Hyatt Regency Crown Center Hotel has a business center, which is available, \$5.00 (for first half-hour), from 7:00 a.m. to 5:00 p.m. The hotel lobby is a complimentary wifi-zone and each hotel room offers T-Mobile Internet that can be applied to your account at \$9.99 per 24-hour period.

### **TRANSPORTATION**

Kansas City, Missouri is extremely easily accessible by air or car. Please check the NAASSKC 2006 CONFERENCE web site ([www.park.edu/naasskc](http://www.park.edu/naasskc)) for more information on your transportation options.

#### ***Air Transportation:***

Kansas City International Airport (MCI) is just 20 minutes from the Hyatt Regency Crown Center Hotel. After you have obtained your luggage, please proceed to the Ground Transportation Center for "KCI Express" service to the hotel. For return reservations to the airport, please contact the Concierge's Desk at the hotel. The shuttle fee is \$16.00 one-way or \$28.00 roundtrip. The shuttle runs every 30 minutes.



**Car Transportation:**

*Approaching from Omaha, Nebraska/Saint Joseph, Missouri—Use I-29 South:*

Take I-29 South to U.S. 169 South (169 turns into Broadway). Proceed on BROADWAY to 20TH ST. Turn LEFT (EAST) and proceed to MCGEE. Turn right onto MCGEE ST. Hotel is 3 blocks uphill on left at 2345 MCGEE ST.

*From Des Moines—Use I-35 South:*

Take I-35 and I-29 merge in Kansas City—continue SOUTH on I-29/I-35. Merge onto US-71 S via EXIT 3 on the LEFT toward I-70 E. Take the I-670/US-71 S exit- EXIT 2L toward I-35 S/WICHITA. Merge onto US-71 S via EXIT 2M on the LEFT. Take the 22ND ST exit toward THE PASEO. Turn SLIGHT RIGHT onto E 22ND ST. Turn SLIGHT RIGHT onto GILHAM RD. Turn LEFT onto MCGEE ST. End at Hyatt Regency Crown Center, 2345 MCGEE ST.

*Approaching from Saint Louis, Missouri—Use I-70 West:*

Take I-70 West to the U.S. 169 / Broadway Exit. Turn LEFT onto BROADWAY. Proceed on BROADWAY to 20TH ST. Turn LEFT (EAST) and proceed to MCGEE. Turn right onto MCGEE ST. Hotel is 3 blocks uphill on left at 2345 MCGEE ST.

*Approaching from Topeka, Kansas—Use I-70 East:*

Take I-70 East to the U.S. 169 / Broadway Exit. Turn RIGHT onto BROADWAY. Proceed on BROADWAY to 20TH ST. Turn LEFT (EAST) and proceed to MCGEE. Turn right onto MCGEE ST. Hotel is 3 blocks uphill on left at 2345 MCGEE ST.

**WEATHER**

Kansas City's past temperature reports for the time of the conference indicates an average high of 55 and average low of 35 degrees Fahrenheit.

**RESTAURANTS AND ATTRACTIONS**

Information on quality dining, historic Kansas City sites, shopping, as well as planned group or family activities will be listed in your conference packet available at the Conference Registration Center, located in the hotel lobby, next to hotel check-in, on the ground level of the hotel. Assistance is also available at the concierge's desk located in the hotel lobby.

The NAASSKC 2006 CONFERENCE web site ([www.park.edu/naasskc](http://www.park.edu/naasskc)) also listed numerous options for dining, historical sites, shopping, and activities.

**FOR FURTHER INFORMATION**

Regarding conference registration and/or logistics, please contact:

Timothy C. Westcott, Ph.D.  
NAASS Conference Host  
Park University  
Direct Dial: (816) 584-6364 (Office)  
E-mail: [tim.westcott@park.edu](mailto:tim.westcott@park.edu)

## Pre-Conference Activities

Saturday  
November 4, 2006

*Summer Sessions...  
As You Requested*



### **THE ARTISTIC EXPRESSION OF KANSAS CITY**

9:30 a.m. - 4:00 p.m.

This NAASS trip will provide a fascinating artistic tour of two unique regional museums of art — the Nelson-Atkins Museum of Art and the Kemper Contemporary Museum of Art. The Nelson-Atkins Museum of Art is “recognized internationally as one of the finest general art museums in the United States.” The Beaux-Art museum opened in 1933 and currently is expanding into the new Bloch Building. The museum currently contains more than 34,000 works of art. Collections include African, American, American Indian, Ancient, Chinese, Decorative Art, European, Japanese, Kansas City Sculpture Park, Modern and Contemporary, Photography, Print, and South and Southeast Asian. The second museum is the Kemper Museum of Contemporary Art. The Kemper contains “works by modern and contemporary artists from around the world. Since the Kemper Museum’s opening in 1994, its permanent collection has more than tripled. Works in the collection range from those created after the 1913 Armory Show, an important benchmark in modern art, to the present.” Delegates will be able to view the permanent collections of Polly Apfelbaum, Arthur Dove, Louise Bourgeois, Dale Chihuly, Damien Hirst, Andrew Wyeth, Fairfield Porter, Georgia O’Keeffe, Frank Stella, Lesley Dill, Romare Bearden, Christian Boltanski, Robert Mapplethorpe, Garry Winogrand, Kojo Griffin, Matthew Ritchie, Wayne Thiebaud, Petah Coyne, Tom Otterness, and Hung Liu. The tour includes a professional tour guide for both museums and lunch in the 15th century Italian courtyard Rozzelle Court Restaurant.

*Cost: \$50.00*

### **EARLY-BIRD RECEPTION**

6:00 p.m. - 7:00 p.m.

President John Labrie offers you a gracious early welcome to the conference as he hosts this happy hour for conference delegates who have arrived early. The reception provides an excellent opportunity to retell stories of the day, catch up with colleagues, and find a warm and collegial atmosphere. After the reception, feel free to make dinner reservations with other attendees, old friends, or new delegates at one of Kansas City’s outstanding restaurants, which just may include a little jazz and barbecue.



## Pre-Conference Workshop

Sunday  
November 5, 2006

*Summer Sessions...  
As You Requested*



### *As You Requested*

#### **NEW ADMINISTRATORS' WORKSHOP**

*Using What you Know and Learning What you Need to Know*

*Convener: Jon C. Neidy, Bradley University*

The New Administrators' Workshop provides a valuable opportunity for new or almost new Summer Session Administrators to share experiences and learn together. The purpose of the workshop is to provide you with an overview of Summer session, its administration and planning with the new administrator in mind.

The morning sessions are planned to let you reflect and organize your thoughts and help answer some of the questions you may have about summer operations. As new administrators, you all come to summer sessions with different experiences and different perspectives. This highly interactive session will provide you with an opportunity to reflect on what you already know about your university, administration, faculty and programs, and merge your knowledge with new information about the uniqueness of the Summer term.

The half-day session culminates with lunch at 12:15 p.m. when members of standing committees and the Administrative Council (the governing body of NAASS) will join you for lunch, thus starting the integration process. New administrators can immediately meet members of NAASS's large network of peers and mentors, all willing to share your concerns and discuss possible solutions. If you are planning on attending this workshop please be sure to register in advance.

*Cost: \$95.00. Includes workshop materials, continental breakfast, and lunch.*

*Jon Neidy is Director of Interims and Summer Sessions and Assistant Director of Continuing Education at Bradley University. In April of this year he was awarded the Dr. Martin Luther King Jr. Administrator Award for Exceptional Leadership in Promoting Unity through Diversity.*

*Mr. Neidy holds a B.S. in Elementary Education from MacMurray College and an M.A. in Curriculum and Instruction from Bradley University. His special interests and skills include the areas of gifted and experiential education, data management, Web site and graphic design, and staff, team and organizational learning and development.*

## Conference Schedule

**Sunday**  
**November 5, 2006**

*Summer Sessions...*  
*As You Requested*




- 7:30-8:00 a.m. **New Administrators' Continental Breakfast**
- 8:00 a.m. **Conference Registration Desk Opens**
- 8:00 a.m.-12:00 p.m. **NEW ADMINISTRATORS' WORKSHOP**
- 8:30-10:00 a.m. **Standing Committee Meetings**  
*Conference and Program Planning Committee, Creative and Innovative Awards Committee, Information and Communications Committee, Membership Committee, Nominations and Elections Committee, Quality and Research Committee*
- 10:00-11:00 a.m. **Finance Committee Meeting**
- 12:15-1:30 p.m. **New Administrators' Luncheon with Mentors**  
*Members of the Administrative Council, standing committee members, join participants of the New Administrators' Workshop for lunch.*
- 1:30-3:45 p.m. **Administrative Council Meeting**  
*Chair: John G. LaBrie, Simon Fraser University  
President of NAASS*
- 4:00-4:30 p.m. **Official Opening Session of the 43rd Annual NAASS Conference**  
**Welcome:**  
*John G. LaBrie, Simon Fraser University  
President of NAASS*  
**Conference Overview:**  
*Karen L. Heikel, University of Minnesota, Duluth  
President-Elect of NAASS and Conference Program Chair*  
**Site Specifics:**  
*Timothy C. Westcott, Park University  
Gary Heisserer, Park University  
NAASS Conference Hosts*
- 4:30-5:00 p.m. **OPENING PLENARY SESSION**  
**A NAASS Strategic Plan Update**  
*Presenter: John G. LaBrie, Simon Fraser University*  
As President of NAASS, John will present the road map strategic plan for the organization as well as the action steps developed and being implemented by our organization. Emphasis will be given to the actual recommendations and their role in shaping the organization. Come hear about this work in progress.

## Conference Schedule

Sunday  
November 5, 2006

*Summer Sessions...  
As You Requested*



5:00-5:30 p.m.

### **Kansas City History**

*Presenter: Tim Westcott, Conference Host and Social Sciences  
Department Chair, Park University*

"At the confluence of the Missouri and Kansas Rivers stands a community of adventurers and explorers. Kansas City has grown from a small fur trading post to a major regional metropolitan community. The historical past has included surviving the turmoil of "Bleeding Kansas" and the Civil War; the growth and westward expansion celebrated by the Oregon, Santa Fe, and California trails and railroads; the political machinery of the Pendergast family; the notoriety of Harry S. Truman; and major natural disasters of floods and fires. But one can not forget the influences of jazz and barbeque! The Park University Conference Team invites you to join the hospitality of the Midwest! Do not miss the food, fun, and friendship that the conference and our city will furnish."

6:00-7:00 p.m.

### **President's Reception, Union Station**

Join NAASS President John LaBrie in this beautiful and historic location as he officially welcomes you to the opening of the 43rd Annual NAASS Conference. Hors d'oeuvres, beverages, and light entertainment will add to the evening's festivities. Greet old friends and colleagues, and meet new ones!

7:00 p.m.

### **Dinner on your own**

## Conference Schedule

Monday  
November 6, 2006

*Summer Sessions...  
As You Requested*



7:30-8:30 a.m.

### **Continental Breakfast**

8:30-9:30 a.m.

### **Creative & Innovative Poster Session (formal) Presentations**

Listen to short, prepared presentations during the creative and innovative poster session. What used to be a casual viewing and discussion with participants, is now a formal session. Come early for the continental breakfast and grab a seat to enjoy the presentations.

*Coordinator: Allyson I. Morris, Regis University*

*Presenters: Award finalists*

9:30-10:30 a.m.

### **PLENARY SESSION II**

#### ***The Future-Focused Organization: A Toolkit for Smart Change***

*Presiding: John G. LaBrie, Simon Fraser University*

*Presenter: Linda Baer, Senior Vice Chancellor*

*Minnesota State Colleges and Universities*

Next Generation Organizations of higher education must provide a gold standard in education, research, and service for learners, citizens and communities. Doing so requires a well-defined toolkit of strategies for spearheading smart change. These include understanding the dynamics of change management, shared leadership, smart change design principles, and maximizing collaboratives. In this session, participants will be provided with a toolkit for introducing smart change and will consider implications of its use within their institutions.

#### ***Presenter's Biography:***

*Dr. Linda Baer earned her B.A. degree in sociology from Washington State University, her M.A. degree in sociology from Colorado State University and her Ph.D. from South Dakota State University. Before joining the Office of the Chancellor staff, Dr. Baer was the Senior Vice President for Academic and Student Affairs and also Interim President at Bemidji State University.*

*Dr. Baer provides leadership throughout the State of Minnesota and presents nationally in academic innovations, e-learning and services, bridging higher education with the workplace, assessment and accountability, educational transformation, and the development of alliances and partnerships. Her recent publications and presentations include work in the challenge of change, myths and realities of technology-enhanced education, the blueprint for building strong partnerships, and the campus of the future. Dr. Baer co-authored a book entitled, Partnering in the Learning Marketplace. She published articles on*

## Conference Schedule

Monday  
November 6, 2006

*Summer Sessions...  
As You Requested*



*"Higher Education and Technology: Bridging the Generation Gap,"  
and most recently in the inaugural issue of the Rural Minnesota  
Journal titled "Trends and Tsunamis: Rural Higher Education."*

10:30-11:00 a.m. **Beverage break**

11:00 am-12:30 p.m. **FOUR CONCURRENT SESSIONS**

***1A Evaluate Revenue-enhancing Opportunities for your  
Marketing & Research***

*Recorder: Heidi Zoerb, University of Wisconsin, Madison*

*Presenter: Erin Bailey, Lewis and Clark College*

Interested in improving your bottom line? This workshop will teach you how to evaluate opportunities to enhance your summer session revenue. We will work in small groups to:

- assess your summer session's potential with a SWOT analysis (strengths, weaknesses, opportunities, threats);
- estimate the potential benefits of new opportunities with the "4 R" framework (revenue, reputation, recognition, recruitment); and,
- identify the demographics of your target audiences and create marketing plans to reach each audience.

You will leave the workshop with a framework to select the most effective ways to grow your program's revenue.

***1B Five Years Later; Outcomes of Decentralization at one  
Midwestern Big Ten University  
Administrative Structure***

*Recorder: Lilieth H. Nelson, The University of the West Indies*

*Presenter: Sandra Buike Phillips, Michigan State University*

In July 2001, the centralized academic Outreach unit providing support for continuing education at Michigan State University was eliminated. Departments and colleges became responsible for a series of activities once provided for and supported by the centralized continuing education office. On-campus departments became responsible for initiating off-campus graduate programming, the marketing of these programs, student recruitment and many aspects of the logistics involved in delivering courses off-campus.

Join us for a look at the impact of the decentralized system on program initiation and sustainability, marketing, and student recruitment over the last five years. You might be surprised by the findings!

Monday  
November 6, 2006

*Summer Sessions...  
As You Requested*



***1C Math CAMMP: A Creative and Innovative Award Winner  
Twelve Years Later!***

**Programming**

*Recorder: Tim Peterson, Washburn University*

*Presenter: Ken Burrows, University of North Carolina at Charlotte*

An important criterion for any model program we brag to our colleagues about is reproducibility. Too often our programs turn out to be flashes in the pan, one-time wonders. UNC Charlotte's Math CAMMP, a careful integration of undergraduate and graduate credit-bearing teacher education and summer camp, is now fifteen years old. Twelve years ago it received NAASS's award for creative and innovative programs. In Summer 2006 we were never more excited about the project, and enrollment of teachers in the courses and kids in the camp is at record levels. Our session will present (highly illustrated) information about all aspects of the project—the course and the camp; how summer staff, faculty, teachers, and children work together; budgeting and funding; place in the entire summer program; and what teachers and parents say. We will leave time for discussion about what makes the project work, comparisons with similar projects you may be conducting, and how you might duplicate a project like ours on your campus.

***1D Millenials on Board***

**Professional Development**

*Recorder: Annette Day, St. Cloud State University*

*Presenter: Casey Kiess, University of Minnesota, Duluth*

Have you noticed our students have changed? Wired and connected, group focused and achievement oriented, outspoken and confident, special and protected, exceptions are the rule. Who are these people, why are they in my office, and why is their mother on the phone? Let's take a look at the Millenials—a generation as big as the Boomers, having just as much impact on institutions and society.

12:45-1:45 p.m.

**REGIONAL LUNCHEONS**

These luncheons provide an opportunity for current members to renew acquaintances with local friends over lunch. For those of you who are new to summer session, here is a chance to meet and begin networking with colleagues from your own region. Many regions also conduct business of regional interest at the luncheons.

## Conference Schedule

Monday  
November 6, 2006

*Summer Sessions...  
As You Requested*



### ***Middle States Region***

*Presiding: Sue Day-Perroots*

Members from Delaware, the District of Columbia, Maryland, New Jersey, Pennsylvania, Virginia, and West Virginia.

### ***North Central Region***

*Presiding: Les J. Coyne*

Members from Illinois, Indiana, Iowa, Kansas, Kentucky, Manitoba, Michigan, Minnesota, Missouri, Nebraska, North Dakota, Ohio, South Dakota, and Wisconsin.

### ***Northeastern Region***

*Presiding: Thomas K. Ingram*

Members from Connecticut, Maine, Massachusetts, New Brunswick, New Hampshire, New York, Newfoundland, Nova Scotia, Ontario, Prince Edward Island, Quebec, Rhode Island, and Vermont, and England.

### ***Southern Region***

*Presiding: Ken C. Burrows*

Members from Alabama, Arkansas, the Bahamas, Florida, Georgia, Louisiana, Mississippi, North Carolina, Oklahoma, South Carolina, Tennessee, Texas, and the West Indies.

### ***Western Region***

*Presiding: Linda D. Schoepflin*

Members from Alaska, Alberta, Arizona, British Columbia, California, Colorado, Hawaii, Idaho, Montana, Nevada, New Mexico, Oregon, Saskatchewan, Utah, Washington, and Wyoming.

2:00-3:30 p.m.

### **CONCURRENT SESSIONS**

#### ***2A Listening to your Audience: Marketing Strategies and Students' Surveys***

#### **Marketing & Research**

*Recorder: Kimberly Good, University of Wyoming*

*Presider: Marcia Salazar-Valentine, Bowling Green State University  
Ann Krebs, Bowling Green State University*

What did our young undergraduate students think of our marketing strategies to promote summer session? How could we turn their suggestions into action? This presentation will reveal what Bowling Green State University's summer team learned from listening to a group of students, and how we implemented some of their ideas into the course catalog and other printed materials, summer giveaways, and summer session promotional events, including a Summer Program Fair.



***2B Faculty Unions and Summer Sessions Administration  
Administrative Structure***

*Moderator: Jim Murphy, University of North Carolina at Chapel Hill*

*Recorder: Beverly L. Auel, Michigan Technological University*

*Presenter: Evelyn Goldsmith, Kent State University*

*William Weber, Eastern Illinois University*

Collective bargaining agreements create special challenges and opportunities for administrators of summer sessions. Summer faculty compensation, calculation of faculty workloads, and eligibility for summer teaching assignments may all be governed by the collective bargaining agreement, and thus significantly reduces the degree of freedom available to the summer session administrator. To further add to the complexity, each of these practices may be administered differently in the summer than during the academic year. Unionized faculty may view efforts to promote the summer sessions as frivolous expenditures, and contract administrators may be blissfully unaware of the impact that the policies they negotiate have on summer sessions. Discover how to cut through this Gordian knot (or at least unravel it a bit) in this session where we share our experiences, insights, and battle scars from administering summer sessions on campuses with unionized faculty.

***2C Assessing our First Winter Term: A Case Study of an  
Innovative Three-week Term  
Programming***

*Recorder: Stefan Gunther, The George Washington University*

*Presenter: Beth Laves, Western Kentucky University*

*Jennifer Perry, Western Kentucky University*

Western Kentucky University offered its first winter term in 2006 after three years of planning. This term is separate from fall and spring terms, and the impact of creating a new term was felt by the entire university community. We spent a great deal of time and effort putting together an annual report assessing our first winter term at Western Kentucky University, which was presented at the quarterly Board of Regents meeting in April 2006. We would like to share our experiences in:

- researching student interest through surveys, a focus group, and email;
- working extensively with committees to recommend new policies for workload, graduate assistantships, faculty pay, and student course load, time and day schedules;



## Conference Schedule

Monday  
November 6, 2006

Summer Sessions...  
As You Requested



- tracking course offerings and student enrollments, cancellations, low-enrolled classes;
- developing and implementing our marketing strategies;
- evaluation through student and faculty surveys, open forums for faculty and staff, and interviews of different offices who were impacted by the new term.

### **2D Reap the Whirlwind: Change and Empowerment Professional Development**

*Recorder: Molly Berger, Case Western Reserve University*

*Presenter: Marc Torick, Rhode Island School of Design*

Everyone faces change with different attitudes and abilities. To merely say that change is a fact of life or a constant in education or business is not helpful to those who must effectively navigate this force. What meaning is encoded in change itself? Within change lies a latent expectancy of self-awareness, a dormant ability to see the work we do from multiple points of view simultaneously, and a vision to see the present separate from the dim origins of the structures and expectations we unconsciously accept as the only reality to work from.

The aim of this session is to explore how to create a context for change, develop an awareness of the skills that we each have within us to assign meaning to this change, and finally, how to get in front of change in order to tap the empowering nature of change and begin to work it on our own terms.

Once change is mastered we are forever free from the fear of the unknown, free of our pre-conceived (and limiting) notions of our own potential and we can radically re-interpret the nature of our jobs and what we can create from the resources we have.

2:00-3:30 p.m.

### **CONSULTATION CORNER**

Have a problem, possible opportunity or tough decision you're trying to make? Chances are one of your NAASS "experts" has tackled the same issue. We've set up a Consultation Corner where you can pose your questions to selected NAASS members and discuss in a quiet and relaxed atmosphere. Our expert's areas of specialty include international program, budgeting, leadership, marketing, programming, to name just a few; and will be posted to help you decide which "consultant" is right for you.


3:30-4:00 p.m.

### **Break**

## Conference Schedule

Monday  
November 6, 2006

*Summer Sessions...  
As You Requested*



4:00-5:30 p.m.

### CONCURRENT SESSIONS

#### ***3A Models and Methods for Establishing Accountability in the Summer Session***

##### **Marketing & Research**

*Recorder: Tom Ingram, Oswego State University of New York*

*Presenter: Richard Lee, University of Nevada, Las Vegas*

The purpose of this presentation is to synthesize and examine existing research and scholarly literature on summer session and related subject areas (e.g. adult or distance education) with specific attention to describing and providing illustrative examples of the purposes, models, methodological approaches, and design of inquiry.

The proposed presentation will examine a taxonomy of quantitative and qualitative research designs and evaluation models used to evaluate summer term or related adult education activity and, for each design, present and example illustrating how the design has been used to address an accountability issue or topic relevant to summer term deans and directors. In preparing this presentation, a number of documents relevant to the summer term were reviewed. The documents fell into seven broad categories which include position papers, commentaries, review of research, descriptive reports, policy briefs and academic research articles.

#### ***3B Institutional Directions, Social Needs, and Money Administrative Structure***

*Recorder: Kathryn Gould Cullivan, University of North Texas*

*Presenter: David Schejbal, University of Illinois at Urbana-Champaign*

Increasingly, universities focus on exclusivity and revenue generation, and the public responsibilities of the institution tend to be forgotten. In this session, we will discuss how current institutional directions need not conflict with the focus on the common good, and how the summer session can be a primary vehicle through which both revenue generation and the common good are addressed. We will discuss not only programming directions, but also home-grown relationships, faculty relationships, and uses of campus infrastructure.

#### ***3C Studying Abroad? Do you have Your Ducks in a Row? Programming***

*Recorder: Thomas Venables, Rutgers—The State University of N.J., Camden*

*Presenter: Carol Switzer, Arizona State University*

Globalization has hit higher education. Institutions send students to

## Conference Schedule

Monday  
November 6, 2006

*Summer Sessions...  
As You Requested*



study abroad, participate in international student and faculty exchanges, and open international branch campuses. Utilizing the recently published National Association of College and University Attorneys (NACUA) "Study Abroad in Higher Education: Program Administration and Risk Management," this session will focus on post 9/11 issues of safety and security in the current climate. A beginning rather than an end, this session will explore the myriad of issues with program administration and risk management in a global society. Most importantly, it will give participants a wealth of resources with which they can "get their ducks in a row."

***3D E and I, and S and N, and T and F, and J and P—Oh My!  
Personality Type in Action***  
**Professional Development**

*Recorder: Barbara Gotshall, Colorado State University*

*Presenter: Casey Kiess, University of Minnesota, Duluth*

You've heard about "the letters:" women are INSP (inspired) and men are ESPN (enough said) and the government is IRS (way too much said). Get together with a group of like-minded and not so like-minded people to experience personality type in action. See how different preferences and preference pairings affect communication, work styles, sense of time, and expectations of others. Since we're all in this together, we may as well appreciate each other! This is not an introduction to personality type. You'll need to know your four letter type (or at least have an educated guess) to benefit from this session.

4:00-5:30 p.m.

**CONSULTATION CORNER**

*See description on page 15.*

5:30-6:00 p.m.

**Free Time**

6:00-7:00 p.m.

**Host Institution's Reception with President Harry S. Truman and baseball cap exchange**

Before you head to dinner, join other conference attendees for refreshments, conversation and entertainment at the Host Institution's Reception. Don't forget a baseball cap from your institution to exchange with a colleague.

7:30 p.m.

**Dinner on your own**

Join other NAASS members for dinner at restaurants in the Plaza. Look for sign-up sheets at the registration area to select a restaurant. Then, catch a reserved bus at the hotel. This is a perfect time to network and visit with conference attendees while enjoying the best of Kansas City cuisine!

## Conference Schedule

Tuesday  
November 7, 2006

*Summer Sessions...  
As You Requested*



7:30-8:30 a.m.

### **Continental Breakfast**

8:30-9:30 a.m.

### **ISSUES ROUNDTABLES**

Take this opportunity to extend your morning coffee and join colleagues for a productive small group discussion. Topic "Roundtables" will be scattered about and focus on topics of concern to you. Table moderators will guide the conversation and are comprised of some of NAASS's most respected and long time members. Come prepared to discuss—you just might find yourself a mentor to someone else!

The roundtable format will be repeated on Wednesday to give you a chance to sit in and participate in another discussion on a different topic of interest to you.

#### **Roundtable A Developing a Research Proposal**

*Table Moderator: Martin Barry, Oregon State University*

Applying for grant funding? Want to submit a proposal to NAASS for consideration for the Theresa Neil Research Fund? This discussion will look at what you should consider before you submit your requests.

#### **Roundtable B "Customer" (student) Service**

*Table Moderator: Natalie Kokorudz, University of Illinois at Chicago*

Can everyone really be your customer? Take this opportunity to share your student service gems and woes with colleagues who can offer advice and support.

#### **Roundtable C Developing a Peer Network**

*Table Moderator: Les Coyne, Indiana University at Bloomington*

The stress of campus politics and the constant state of change in our business can be made easier when you have a trusted peer group which you can go to for objective feedback.

#### **Roundtable D When it's Time "To Go..."**

*Table Moderator: Ron Wasserstein, Washburn University*

This discussion will look at how to "make that big leap" and prepare to move on to new professional challenges.

#### **Roundtable E Finding your Balance**

*Table Moderator: Kimberly Good, University of Wyoming*

This discussion will explore how to find balance among the many roles we elected (or are forced) to play—worker, leader, parent, citizen, etc—and how to manage the demands on our time with conflicting priorities.

## Conference Schedule

Tuesday  
November 7, 2006

*Summer Sessions...  
As You Requested*



9:45-10:45 a.m.

### **PLENARY SESSION III**

#### ***Emerging Issues in Accreditation***

*Presiding: Karen L. Heikel, University of Minnesota Duluth*

*Presenter: Steven Crow, Executive Director Commission on Institutions of Higher Education*

Thanks to Reauthorization of the Higher Education Act and the National Commission on the Future of Higher Education, accreditation in general and regional accreditation in particular have been receiving considerable attention. Moreover, the Department of Education's use of the federal recognition program has sparked complaints from the accrediting community. Dr. Crow will summarize the major issues shaping the current conversations about accreditation highlighting their implications for colleges and universities and the summer school programs in them.

#### ***Presenter's Biography:***

*Steven D. Crow is the Executive Director of The Higher Learning Commission of the North Central Association of Colleges and Schools. He provides leadership to the Commission and its 990 member institutions to assure the effectiveness of regional institutional accreditation and to represent the Commission nationally and internationally.*

*Dr. Crow earned his bachelor's degree in history from Lewis and Clark College and his Master's and Ph.D. degrees in U.S. History from the University of Wisconsin-Madison. Before joining the Commission staff in 1982, he served as an administrator and taught at Bowdoin College, Vanderbilt University, Bates College, and Kalamazoo College.*

*Dr. Crow has been instrumental in making regional institutional accreditation responsive to eLearning, U.S. education delivered internationally, and new collaborative and consortial arrangements created in several states. Most recently his Commission has gained significant attention through its creation of an alternative accreditation process based on quality improvement principles and practices, and through its adoption of new accrediting standards that focus on learning, service, and preparation for the future. Dr. Crow has spearheaded collaborative efforts with other agencies and associations to address distance education, assessment of student learning, provision of quality assurance to trans-regional organizations, and the on-going relationship with the federal government created through the Higher Education Act.*

10:45-11:00 a.m.

### **Beverage Break**

## Conference Schedule

Tuesday  
November 7, 2006

*Summer Sessions...  
As You Requested*



11:00 am-12:30 p.m. **CONCURRENT SESSIONS**

***4A Preparing Your Marketing Plan  
Marketing & Research***

*Recorder: Peter Tanaka, University of Hawaii at Manoa*

*Presenter: Joanna Razzano, State University of New York at Albany*

It is often said that "if you fail to plan, you plan to fail," however, many summer session administrators do their advertising by the seat-of-the-pants method. This workshop will look at planning a summer session marketing program. Important points include knowing when to plan, what to include, setting up your marketing calendar, and preparing a summary after the marketing has been completed. We will also discuss determining who your target audience is and how to reach them. Open discussion will be included at the end.

***4B The Best Organizational Fit for Summer Session  
Administrative Structure***

*Recorder: Sarah Ormrod, University of Cambridge*

*Presenter: Bill McClure, University of Massachusetts at Amherst*

Summer session is an important academic and fiscal function on many campuses. Students rely on summer session to take classes to "catch up," improve grade point, or to graduate on time. Senior campus administrators generally understand that with proper management, summer session should be an important fiscal activity. Summer session's campus organization position is often an important factor that predicts success, both academically and fiscally.

This session explores data from member (NAASS) institutions, and encourages participants to share their specific experiences to better understand how, why, and where summer session best fits into campus organizational charts and what the results can be. Come prepared to interact and learn with your colleagues.

***4C Early College Online and Onsite: Benefiting your Students  
and your University  
Programming***

*Recorder: Hilda Pang Fu, Point Park University*

*Presenter: Tryna Luton, Oregon State University*

Participants will learn how online courses and onsite opportunities help high school students advance and prepare for college through an "Early College" experience. By examining partnerships between Oregon State University, school districts, community colleges, and

## Conference Schedule

Tuesday  
November 7, 2006

*Summer Sessions...  
As You Requested*



other educational organizations, and by examining the details of the program, participants learn the benefits to students and to their university. Different options for starting online early college programs will also be covered, along with how this information may apply to participants' unique situations and institutions.

### **4D Creative Problem Solving in Teams Professional Development**

*Recorder: Sandra Buike Phillips, Michigan State University*

*Presenter: Tom Kowalik, State University of New York at Binghamton*

University Summer Session units and their employees are confronted with the need to improve performance, add value to their programs and services, improve the level of efficiency, and meet increasingly rigorous student and institutional expectations. Many are turning to creative thinking techniques and innovation to maintain their competitive positions and ensure continuous improvement. By learning these techniques, participants are better prepared to meet the challenges and opportunities of working in today's higher education environment. This session is designed to provide creative thinking techniques which can be used individually or in teams to help look at problems and challenges in new ways.

12:30-1:30 p.m.

### **Lunch on your own**

1:30-4:30 p.m.

### **Truman Presidential Library Tour**

President Harry S. Truman assumed the office upon the death of Franklin D. Roosevelt in April 1945. Truman resided for most of his life, outside of national politics, in Independence, Missouri. His Presidential Library, gravesite, and home are currently operated by the National Park Service in Independence. The museum collection consists of approximately 30,000 objects, primarily three dimensional items and works of art on paper and canvas. The museum's collection of personal possessions of the Truman family includes clothing and related accessories — such as Truman's famous canes and hats — membership cards, award certificates and plaques, honorary degrees, and other objects associated with the Trumans' family life, hobbies and social relationships. Truman served in The Great War (World War I) as a captain and the museum contains his military uniforms. Political memorabilia is another large collection held at the library, which include political buttons, badges, ribbons, posters, and novelties. The tour will be hosted by professional tour guides.

*Cost: \$25.00*

## Conference Schedule

**Tuesday**  
**November 7, 2006**

*Summer Sessions...*  
*As You Requested*



4:30-5:30 p.m. **Free time**

6:00-7:00 p.m. **Awards Banquet Reception**

7:00-9:30 p.m. **Annual Awards Banquet, silent auction, and entertainment**

Don't miss this annual event! The winners of the innovative poster award contest will be announced at the banquet. New this year, bid on a variety of items donated by NAASS members. Items up for auction will be available for viewing and bidding from 6:00 - 7:30 p.m., and the winner's names posted after the banquet. All proceeds help defray costs of the annual conference.


Both the reception and banquet are held at 18th and Vine. Catch a reserved bus at the hotel and take it to the banquet. Buses will be available on a timed basis to return people to the hotel.



## Conference Schedule

Wednesday  
November 8, 2006

*Summer Sessions...  
As You Requested*



7:45-8:45 a.m. **Buffet Breakfast**

8:45-9:30 a.m. **ANNUAL BUSINESS MEETING**

Committee reports are delivered, old and new business is addressed, the just-ended 2006 fiscal year is reviewed by the membership and the 2007 operating budget is presented, discussed and a vote taken.

Outgoing president, John LaBrie, turns over the presidential gavel to incoming president Karen Heikel and the new slate of officers are announced.

9:45-10:45 a.m. **ISSUES ROUNDTABLES**

***Roundtable A: Reporting Summer Sessions Data***

*Table Moderator: Laurel Hogue, Central Missouri State University*

What, when, where, why and to whom do we report our data after summer sessions has ended? This guided discussion will explore how different summer session operations account for all those numbers.

***Roundtable B: Funding Formulas***

*Table Moderator: Ken Smith, Virginia Technical*

Take this opportunity to share information and discuss revenue sharing and financial incentive models for summer sessions. The discussion will focus on the goals institutions are seeking to achieve with their financial models and how their models work to help them meet those goals. Bring your current or proposed model or procedures to share with others!

***Roundtable C: Winter Intersessions***

*Table Moderator: Beth Laves, Western Kentucky University*

Do you have a winter intersession that is "bundled" with summer? Interested in offering some classes over the session break? This discussion will focus on the issues surrounding this unique and increasingly popular program option.

***Roundtable D: I've Been Decentralized! (Now what!?)***

*Table Moderator: Jack Johnson, University of Minnesota, Twin Cities*

This roundtable will focus on Summer Session operations which are decentralized. You might think you know what this means but you'll likely find many different modes of operation all using this term to describe their administrative structure.

***Roundtable E: Surviving Change***

*Table Moderator: Heather Harroun, St. Mary's University*

This roundtable will focus on surviving an external review and the transfer of summer programming to another department. In addition to

## Conference Schedule

Wednesday  
November 8, 2006

*Summer Sessions...  
As You Requested*



the professional dynamic of a review and developing a strong program in the midst of uncertainty, it will also open the door to the more personal of maintaining one's motivation and embracing change with a positive go forward attitude!

11:00 a.m.-12:00 p.m. **CONCURRENT SESSIONS**

***5A Assessment and Accountability—Buzz Words or Real Challenges  
Marketing & Research***

*Recorder: Deborah Harris, The University of Arizona*

*Presenter: Karen Sibley, Brown University*

Join this session to learn how to put these challenging words to good use in your programming and how to use the collection of data to help enhance your work. What should you measure and why? How do you ask the right questions? How do you put the data you collect to work? Get in front of the curve and have the data in hand before you are pressed to provide it!

***5B Incorporating Summer Session into a Continuing Education  
Program: A Case Study in Change  
Administrative Structure***

*Recorder: John LaBrie, Simon Fraser University*

*Presenter: Bonita Durand, Buffalo State College*

*Margaret Shaw-Burnett, Buffalo State College*

Buffalo State College incorporated summer session into its Continuing Education program. The president and provost strategically engaged the campus to accommodate such a major change. We were faced with changing the culture and mindset of a senior tenured faculty and an enrollment management structure that was in transition. The campus used Kotter's theoretically based eight-step change model. We used this model because the campus was faced with the crisis of inadequate headcount to meet the financial plan and expectations for the spring semester. The strategic steps models appear to be especially helpful to follow in a crisis when there is less opportunity to sit back and develop one's own model.

## Conference Schedule

Wednesday  
November 8, 2006

*Summer Sessions...  
As You Requested*



***5C Programming for High School Students: Integrating Credit and Non-credit Opportunities***  
**Programming**

*Recorder: Kay Fiset, Syracuse University*

*Presenter: Bobby Puryear, North Carolina State University*

Program providers and participants from many markets are expressing interest in combining credit and non-credit learning opportunities. The Summer College in Biotechnology and Life Sciences at North Carolina State University, provides advanced high school students who have a passion for science the opportunity to explore subjects like Molecular Biology, Microbiology, Biochemistry, etc. in the summer. Credit and non-credit learning opportunities may be combined in a residential or non-residential format. This session includes a discussion of the internal and external planning phases with a focus on efforts taken to streamline work flow across distinct credit and non-credit program offices.

***5D Promoting Online Course Development in Summer Sessions by Using a Data Driven Decision Environment***  
**Programming**

*Recorder: Ken Burrows, University of North Carolina at Charlotte*

*Presenter: Rick Sluder, Central Missouri State University*

Learn how leaders can create a culture and setting to promote the development and offering of online courses in the summer. If summer planning and decision-making is data driven, with a healthy pay rate for summer courses, and contingency contracts to provide for lower enrollment courses, and revenue sharing with academic departments, there is a natural market pressure that will provide incentive for the development of online courses.

12:00 noon

**43rd Annual Conference Adjourns**

12:30-3:00 p.m.

**Administrative Council Luncheon Meeting**

**2006  
Standing Committee  
Members**

*Summer Sessions...  
As You Requested*



The following members are expected to attend their respective committee meetings on Sunday, November 5 (see page 8), and then host a new member at the New Administrator's Luncheon at 12:15 p.m.

**Conference and Program Planning  
Committee**

Karen L. Heikel, *Chair*  
Deborah J. Harris  
Heather Harroun  
John G. LaBrie  
Michael U. Nelson  
Peter Tanaka  
Thomas J. Venables  
Timothy C. Westcott

**Creative and Innovative Awards Committee**

Allyson I. Morris, *Chair*  
Cathy M. Evans  
Claudette Free  
Catherine E. Harris  
Lori Smith Jennaway  
James H. Powell  
Florie A. Wilcoxson

**Finance Committee**

Deborah J. Harris, *Chair*  
Sylvia H. Gamboa  
Kerri M. Garcia  
Donald R. Howie  
Suzanne Murphy  
Dennis L. Nunes  
E. Mike Poe

**Nominations and Elections Committee**

Carol Switzer, *Chair*  
Leslie J. (Les) Coyne  
John F. Cudd, Jr.  
Anita D. McDonald  
Karen H. Sibley

**Information and Communications  
Committee**

John G. LaBrie, *Chair*  
Molly W. Berger  
Ken C. Burrows  
Renate H. Guilford  
Jessica Madrigal  
Cordelia Maloney  
Sarah J. Ormrod  
Patricia L. (Trish) Suske  
Linda Marie Williams

**Membership Committee**

Leslie J. (Les) Coyne, *Chair*  
Ken C. Burrows  
Sue Day-Perroots  
Thomas W. Fuhr  
Kerri M. Garcia  
Thomas K. Ingram  
John H. Leffler  
Michael U. (Mike) Nelson  
Linda D. Schoepflin

**Quality and Research Committee**

Martin D. Barry, *Chair*  
Erin Bailey Dev  
Allan G. (Al) Fanjoy, Jr.  
Bill J. Kops  
Loy D. Lytle  
Howard Martin  
Lilieth H. Nelson  
David Schejbal  
Ronald E. Trebon  
Ronald L. (Ron) Wasserstein



The Administrative Council is the governing body of the Association and shall consist of (a) the officers of the Association: the President, the President-Elect and the Treasurer; (b) one Vice President from each of the geographic regions designated as Association Regions in the Bylaws; (c) three At-Large Members; and (d) the immediate Past President. (*Article V, Section I of the Constitution*)

**President**

John G. LaBrie  
Simon Fraser University

**Middle States Vice President**

Sue Day-Perroots  
West Virginia University

**President-Elect**

Karen L. Heikel  
University of Minnesota, Duluth

**North Central Vice President**

Leslie J. Coyne  
Indiana University at Bloomington

**Past President**

Carol Switzer  
Arizona State University

**Northeastern Vice President**

Thomas K. Ingram  
Oswego State University of New York

**Treasurer**

Deborah J. Harris  
The University of Arizona

**Southern Vice President**

Ken C. Burrows  
University of North Carolina at Charlotte

**Western Vice President**

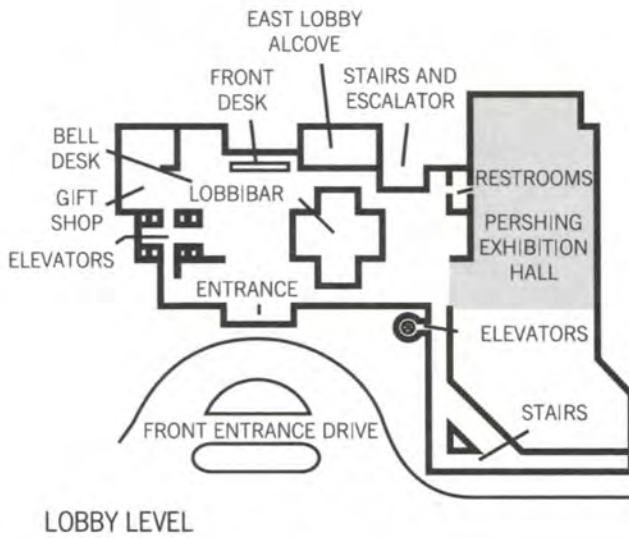
Linda D. Schoepflin  
Washington State University (thru 2006)

**At-Large Members**

Kay P. Fiset  
Syracuse University  
Barbara H. Gotshall  
Colorado State University  
Allyson I. Morris  
Regis University

Hotel Map and  
Floor Plans

*Summer Sessions...  
As You Requested*





# NORTH AMERICAN ASSOCIATION OF SUMMER SESSIONS 43RD ANNUAL CONFERENCE

*Summer Sessions As You Requested*

## 2006 CONFERENCE REGISTRATION FORM

(If registering and paying online, the web address is [www.park.edu/NAASSKC](http://www.park.edu/NAASSKC) for the Conference Registration Form and web link to the Hyatt Regency Hotel)

(PLEASE PRINT)

Please check one:  NAASS Member  Non-NAASS Member  Guest

First Name Last Name Title

Institution

Mailing Address

City State/Prov Zip/Postal Code

Telephone Fax

Email

Website

Public Institution  Private Institution

Name Preferred on Badge

Name(s) of Guest(s) Attending:

Professional Guest

Professional Guest

*Please fill out a separate registration form for additional registrants from same institution*

Personal Guest

Personal Guest

Personal Guest

**SPECIAL ASSISTANCE:** If you require special assistance, please notify us here and you will be contacted. All requests for special assistance must be submitted at least 30-days prior to the start of the conference. To the maximum extent possible, every effort will be made to provide reasonable accommodations for the assistance requested.

I require special assistance, please contact me  Wheelchair  Hearing interpreter

**OPTIONAL QUESTIONS:**  I am a first time attendee at NAASS

I am a plenary guest speaker

I am an honorary lifetime member

**CONFERENCE PRE-REGISTRATION\*\* OPTIONS: (Available March 1-July 31, 2006)**

Choose only one

- NAASS Members Only .....\$999.00
- Non-NAASS Members\* Only .....\$1,099.00

**Registration Includes:** • All Receptions/Banquet (Sat.-Tues.)  
 • 4-nights lodging at Hyatt Regency Crown Center Hotel (Sat.-Tues.)  
 • Harry S. Truman Presidential Tour (Tues.)  
 • One year NAASS membership (for Non-NAASS members only)

Hotel Reservations will be made for you under the Pre-Registration Rates only;  
 please choose your two preferences:

- Smoking Room     Non-Smoking Room     Single Bed     Double Bed

\*\* Pre-registration package is all inclusive and cannot be subdivided.

**OPEN REGISTRATION: (Available August 1 - September 30, 2006)**

Does not include hotel or any tours

- NAASS Members Includes all Receptions/Banquet (Sat.-Tues.) .....\$ 450.00
  - NON-NAASS Members\* Includes all Receptions/Banquet (Sat.-Tues.) .....\$ 525.00
  - Additional registrants from the same institution after the first two .....\$ 425.00
- Includes all Receptions/Banquet (Sat.-Tues.)*

Please fill out a separate registration form for additional registrants from same institution.

\* Any non-member institution paying the \$450.00 Basic Registration Fee is automatically granted a one-year membership in the Association.

**LATE REGISTRATION: (Available October 1 - November 8, 2006)**

Does not include hotel or any tours

- NAASS Members .....\$ 475.00
- NON-NAASS Members\* .....\$ 525.00

**WORKSHOP: (Not included in any registration options)**

**Sunday**

- New Administrator's Workshop (Includes breakfast, lunch and materials) .....\$ 95.00

**TOURS:**

**Saturday Pre-Conference Tour (Open to all registrants)**

- Nelson-Atkins Museum of Art & Kemper Contemporary Museum of Art .....\$ 50.00
- Includes lunch*

**Tuesday (Available to open or late registrants; included with pre-registration packages)**

- Harry S. Truman Presidential Library .....\$ 25.00

**RECEPTIONS/BANQUET FUNCTIONS:**

Please mark which functions you plan on attending.

- Saturday**     Early Bird Reception @ 6:00 p.m.
- Sunday**     NAASS President's Reception @ 6:00 p.m.
- Monday**     Continental Breakfast @ 7:30 a.m.
- Monday**     Regional Luncheon @ 12:45 p.m. (choose one)  
                    Middle States     Northeastern     North Central     Southern     Western
- Monday**     Host's Reception @ 6:00 p.m.
- Tuesday**     Continental Breakfast @ 7:30 a.m.
- Tuesday**     Awards Banquet Reception @ 6:30 p.m.
- Tuesday**     Awards Banquet @ 7:30 p.m.
- Wednesday**  Buffet Breakfast @ 7:45 a.m.

**TOTAL FOR REGISTRANT:** \$ \_\_\_\_\_

Add your one (pre, open or late) Registration Fee, Workshop, Tour(s) Selections



**SUBMISSION OF FEES FOR REGISTRANT:**

Accepted Credit Cards  VISA  MASTERCARD  DISCOVER CARD

Credit Card Account Number \_\_\_\_\_

Exact Name on Credit Card \_\_\_\_\_

Expiration Date \_\_\_\_\_ \* MCC or VCODE \_\_\_\_\_

Authorized Signature \_\_\_\_\_

TOTAL AMOUNT CHARGED \$ \_\_\_\_\_

\* The three-digit code appearing on the back of the credit card

**CHECK, MONEY ORDER OR PURCHASE ORDER:**

Please make your check, money or purchase order payable to *Park University*; mail payment and your Conference Registration Form to: Dr. Timothy C. Westcott, Park University, 8700 N.W. River Park Drive, PMB 117, Parkville, MO 64152.

If paying by Purchase Order please enter the following information:

Purchase Order Number \_\_\_\_\_

Institution \_\_\_\_\_

Contact Phone Number \_\_\_\_\_

**CONFERENCE FUNCTIONS FOR PERSONAL GUEST(S):**

Please mark which functions your guest(s) plans on attending.

**Saturday**

- Nelson Atkins & Kemper Contemporary Museums of Art \_\_\_ person(s) at \$50.00 each \$ \_\_\_\_\_
- Early-Bird Reception at 6 p.m. \_\_\_\_\_ person(s) at \$25.00 each \$ \_\_\_\_\_

**Sunday**

- NAASS President's Reception \_\_\_\_\_ person(s) at \$25.00 each \$ \_\_\_\_\_

**Monday**

- Host Institution's Reception \_\_\_\_\_ person(s) at \$25.00 each \$ \_\_\_\_\_

**Tuesday**

- Truman Presidential Library \_\_\_\_\_ person(s) at \$25.00 each \$ \_\_\_\_\_
- Annual Awards Reception and Banquet \_\_\_\_\_ person(s) at \$45.00 each \$ \_\_\_\_\_

**TOTAL for Guest(s)** Add selected items Sat.-Tues. \$ \_\_\_\_\_

**SUBMISSION OF FEES FOR PERSONAL GUEST(S):**

Accepted Credit Cards  VISA  MASTERCARD  DISCOVER CARD

Credit Card Account Number \_\_\_\_\_

Exact Name on Credit Card \_\_\_\_\_

Expiration Date \_\_\_\_\_ \* MCC or VCODE \_\_\_\_\_

Authorized Signature \_\_\_\_\_

TOTAL AMOUNT CHARGED \$ \_\_\_\_\_

\* The three-digit code appearing on the back of the credit card

**CHECK OR MONEY ORDER:**

Please make your check or money order payable to *Park University*; mail payment and your Conference Registration Form to: Dr. Timothy C. Westcott, Park University, 8700 N.W. River Park Drive, PMB 117, Parkville, MO 64152.

**PLEASE NOTE: All fees paid, less \$100.00, are refundable if the conference registration is cancelled via e-mail or written correspondence before Friday, October 27, 2006.**



**N**ORTH  
**A**ERICAN  
**A**SSOCIATION OF  
**S**UMMER  
**S**ESIONS

### *43rd Annual Conference*

November 5-8, 2006

Kansas City, Missouri

### *Conference Hosts*

Park University

8700 NW River Park Drive

Parkville, Missouri 64152

(800) 745-7275

Ext. 6364, Dr. Timothy Westcott

Ext. 6476, Donna Wadley

Hyatt Regency Crown Center

2345 McGee Street

Kansas City, Missouri 64108

(816) 421-1234

[www.crowncenter.hyatt.com](http://www.crowncenter.hyatt.com)

### *Web*

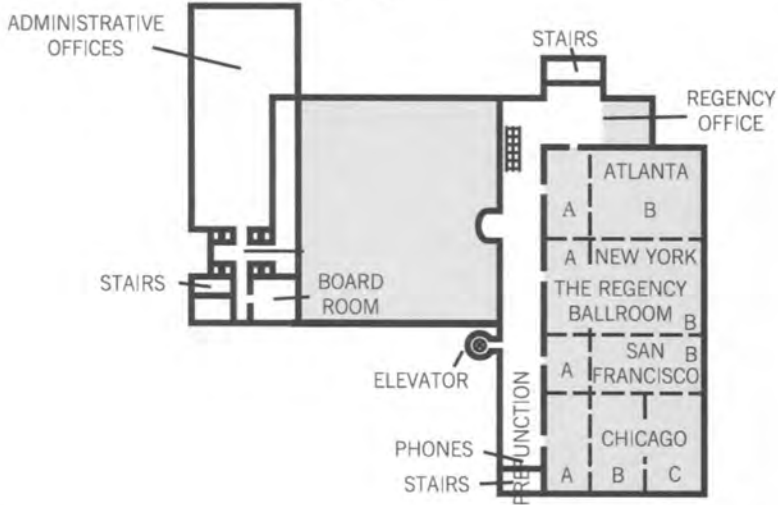
[www.park.edu/NAASSKC](http://www.park.edu/NAASSKC)

**Hotel Map and  
Floor Plans**

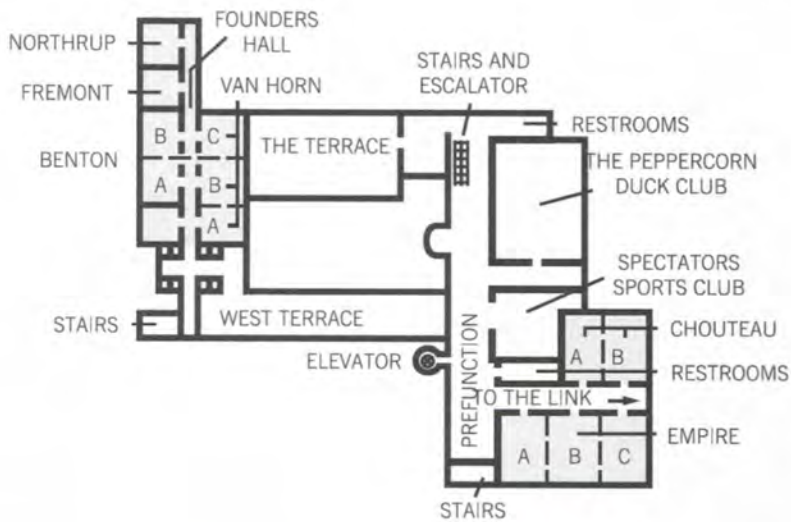
*Summer Sessions...  
As You Requested*



**BALLROOM  
LEVEL**



**MEZZANINE  
LEVEL**





**NORTH  
AMERICAN  
ASSOCIATION OF  
SUMMER  
SESSIONS**

### *43rd Annual Conference*

November 5-8, 2006  
Kansas City, Missouri

### *Conference Hosts*

Park University  
8700 NW River Park Drive  
Parkville, Missouri 64152  
(800) 745-7275  
Ext. 6364, Dr. Timothy Westcott  
Ext. 6476, Donna Wadley

Hyatt Regency Crown Center  
2345 McGee Street  
Kansas City, Missouri 64108  
(816) 421-1234  
[www.crowncenter.hyatt.com](http://www.crowncenter.hyatt.com)

### *Web*

[www.park.edu/NAASSKC](http://www.park.edu/NAASSKC)

